



FLEXIAGENT



Cambridge Road Southport, PR9 9NG

£8,000

**** AVAILABLE FOR THE ROYAL BIRKDALE OPEN 2026 ****

This luxurious apartment is located in the highly sought-after residential area next to Hesketh Park. Set within an exclusive development, it offers convenient access in and out of Southport Town Centre via the A565. The property is surrounded by a wealth of local amenities, including shops, restaurants, and bars.

Finished to a high specification throughout, the apartment features a state-of-the-art Sonos entertainment system and a CCTV security system for added peace of mind.

The accommodation comprises a communal entrance hallway leading to a private entrance hall. There is a spacious lounge with French doors opening into a sunroom, which enjoys views over the well-maintained communal gardens. The contemporary kitchen is fitted with integrated appliances and a breakfast bar. There are three double bedrooms. The master bedroom includes a charming bay window and a modern en-suite shower room. The other two bedrooms benefit from built-in wardrobes. A sleek four-piece white bathroom suite completes the interior.

Externally, the property boasts secure parking with an electric vehicle charging point at the front. To the rear, there are attractive communal gardens and a paved patio area ideal for outdoor relaxation.

Viewings are available upon request.

Viewing

Please contact our Flexi-Agent Southport Lettings Office on 01704 889455 if you wish to arrange a viewing appointment for this property or require further information.

**** AVAILABLE FOR THE ROYAL BIRKDALE OPEN 2026 ****

- Three double bedrooms
- Upper ground floor
- Next to Hesketh Park
- Completed to a high specification throughout
- Fitted kitchen with integrated appliances
- Spacious master with en-suite
- Fully tiled four piece bathroom suite
- Secure parking with car charging point
- Viewings available upon request



3



2

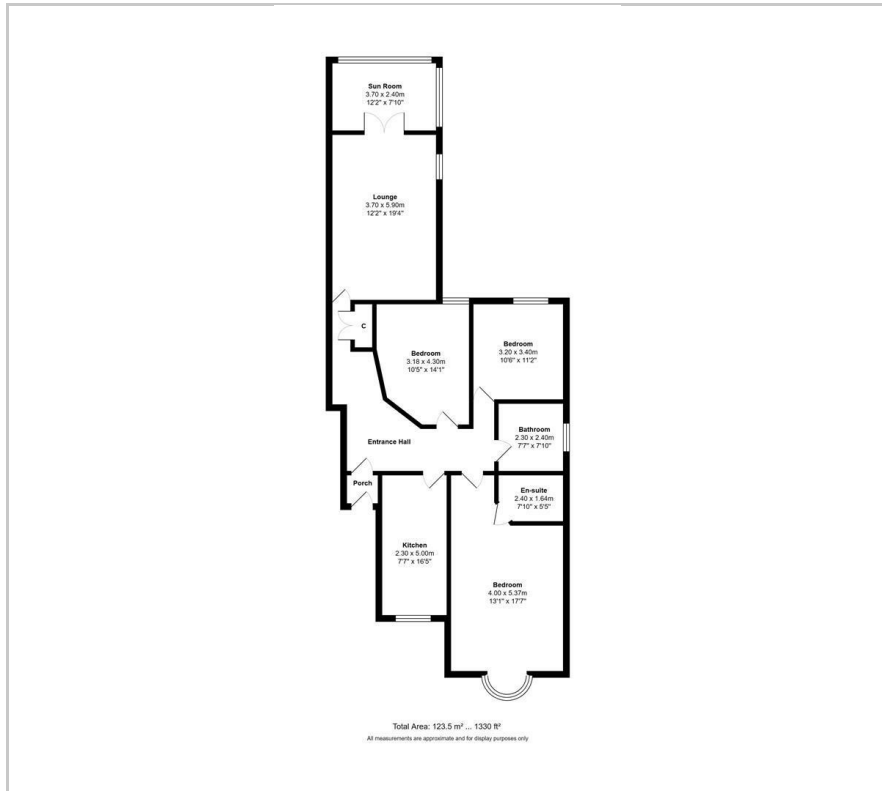


2



B

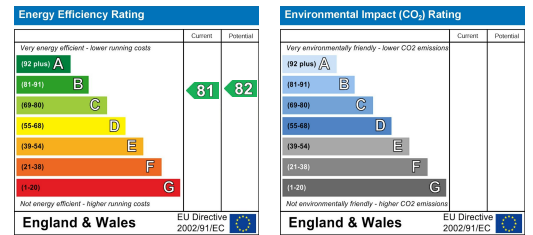
Floor Plan



Area Map



Energy Efficiency Graph



These particulars, whilst believed to be accurate are set out as a general outline only for guidance and do not constitute any part of an offer or contract. Intending purchasers should not rely on them as statements of representation of fact, but must satisfy themselves by inspection or otherwise as to their accuracy. No person in this firm's employment has the authority to make or give any representation or warranty in respect of the property.